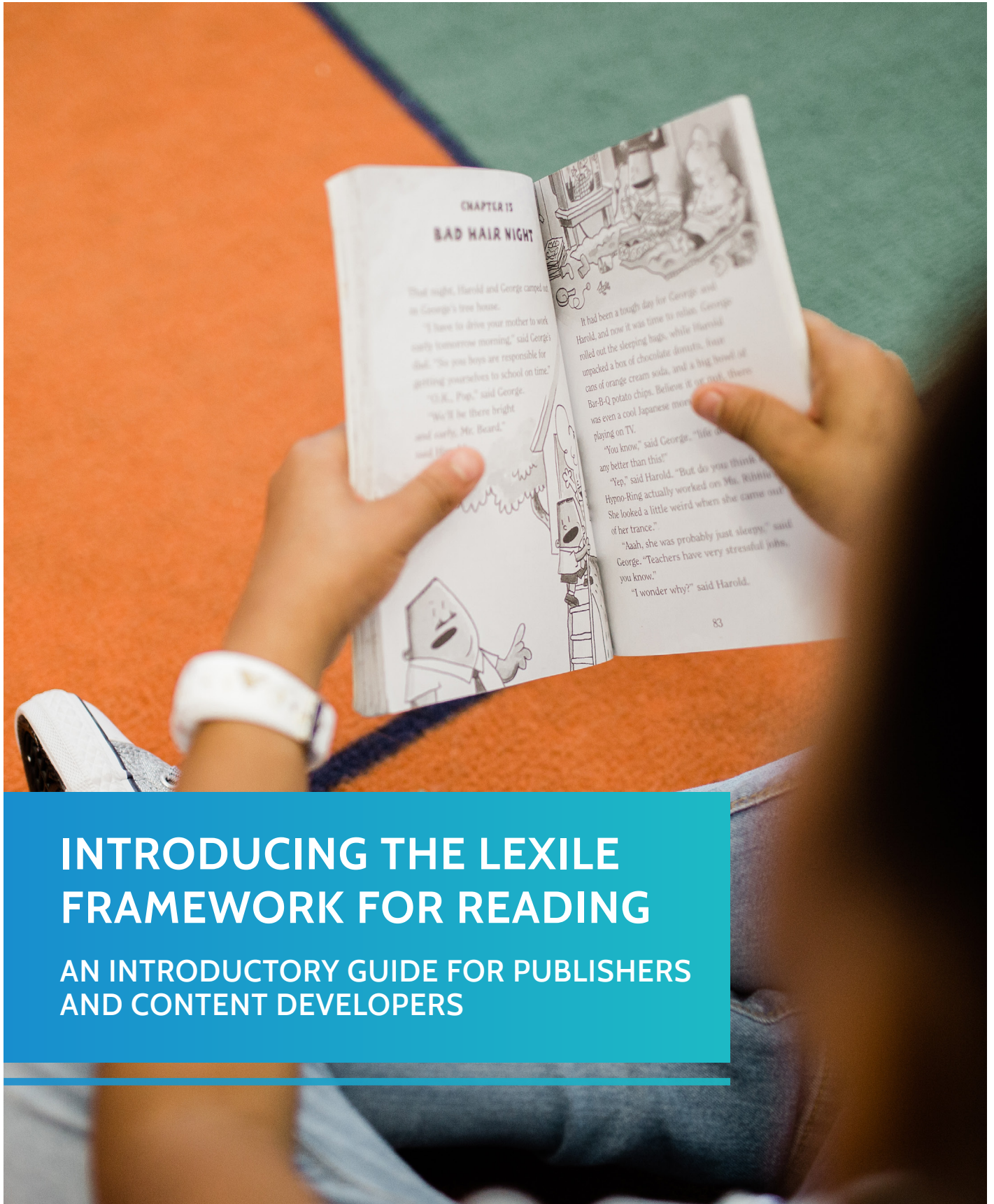




# LEXILE FRAMEWORK<sup>®</sup>

## FOR READING



## INTRODUCING THE LEXILE FRAMEWORK FOR READING

AN INTRODUCTORY GUIDE FOR PUBLISHERS  
AND CONTENT DEVELOPERS

## You Have Lexile Measures...Now What?

With licensing rights to certified Lexile measures for your texts, you can take advantage of your Lexile competitive edge by:

- ➔ Printing Lexile measures on your book jackets.
- ➔ Adding Lexile measures to the book data included in your print and digital catalogs.
- ➔ Adding Lexile measures to your book product pages on your website.
- ➔ Adding Lexile measures to teachers' guides or lesson plans that accompany books.
- ➔ Including a search feature in your catalogs and/or website where users can browse by filters that include Lexile measures.
- ➔ Including the Lexile logo/seal in your marketing materials, advertisements and trade show signage.

**MetaMetrics®** communicates information about your books that will increase the discoverability and visibility of your offerings. We will include your books in our **Lexile® Titles Database**, which then feeds to distributors as well as our book search database **Lexile® Find a Book**, that performs over a million searches a month.

Most major wholesalers, distributors and library automation and management systems integrate Lexile measures into their products, offerings and records. This means that your materials will be easily identified by educators, parents and students when they are searching for books in libraries or bookstores like Barnes & Noble and Amazon.

## TAKE A LOOK

4

An Introductory Guide  
to Lexile Measures

10

How Do Texts Receive  
Lexile Measures?

17

How Do Students Receive  
Lexile Measures?



A young boy with curly hair is shown in profile, reading a book. He is standing in a library or bookstore, with wooden bookshelves filled with books visible in the background. The lighting is warm and natural, coming from a window out of frame. The boy is wearing a blue t-shirt with a graphic on it. The book he is holding has an orange cover and the title 'THE APACHE' is visible.

# AN INTRODUCTORY GUIDE TO LEXILE MEASURES

*We are grateful for your partnership. For 35 years, we have partnered with publishers to connect students with good reading and learning matches. We are providing this section of the Toolkit to help you and your staff become acquainted with the Lexile Framework and the benefits of using Lexile measures.*

More state education agencies than ever before are leveraging Lexile measures to accelerate learning and help students graduate ready for success in college and careers. That means more students are using the textbooks, trade books, educational series and other content that is measured and added to the Framework each day. The accuracy and flexibility of the Framework make it a stigma-free way to communicate achievements and goals with students, parents, employers and educators. It is our pleasure to support you in the implementation of Lexile measures.

# The Lexile Framework: A Universal Measure for Students and Texts

---

## LEXILE STUDENT MEASURES

A **Lexile student measure** is the numeric representation of a student's ability to read. The Lexile scale is a developmental scale ranging from beginning reader measures below OL to above 1600L for advanced abilities. The higher the student's Lexile measure, the greater their reading ability.



Over **35 million students** from **50 U.S. states** and **180 countries** receive Lexile reader measures from over **65 popular reading assessments** and programs.

## LEXILE TEXT MEASURES

A **Lexile text measure** is the numeric representation of a text's difficulty. Like Lexile student measures, the higher the Lexile text measure, the more difficult the text is to comprehend. The Lexile scale is a developmental scale ranging from beginning reader texts below OL to above 1600L for advanced texts.



More than **100 million books, articles and websites** have received Lexile text measures.

# What Makes Lexile Measures Actionable?

Oftentimes, tests measure students in a way that don't indicate next steps for learning. The Lexile Framework for Reading (in English and Spanish) is a scientifically valid approach to matching students with reading materials because both students' abilities and text difficulty are measured on the same scale in the same units. The Lexile scale connects students to reading materials at their unique ability levels – both today and as their reading abilities grow. Students' Lexile measures are more than test scores. They apply to books and articles that students encounter daily – in class, at home, online and in the library and bookstore.

**Lexile Framework® for Reading**

**El Sistema Lexile® Para Leer**

**“MetaMetrics and the *Lexile measure* are the gold standard for text complexity.”**

— Paul Abdo, Editor in Chief of ABDO Publishing

The diagram illustrates the application of Lexile measures across three settings: Libraries, Bookstores, and Classrooms. Each setting is represented by an icon (a person reading, a bookshelf, and a classroom building) and a speech bubble containing logos of partner organizations.

- IN LIBRARIES:** Logos include Biblionix, EBSCO, Follett, GALE, CENGAGE Learning, INGRAM, OCLC, LibraryThing, MARCIVE, INC., and ProQuest.
- AT BOOKSTORES:** Logos include ABDO, amazon, amazon.co.jp, amazon.cn, BARNES&NOBLE, HarperCollinsPublishers, Penguin Random House, Houghton Mifflin Harcourt, and Simon & Schuster.
- IN CLASSROOMS:** Logos include myON by Renaissance, READ180, KidBiz3000, ROSEN, LightSail, TeenBiz3000, READING COUNTS!, RENAISSANCE Accelerated Reader, netfirekker, and newsela.

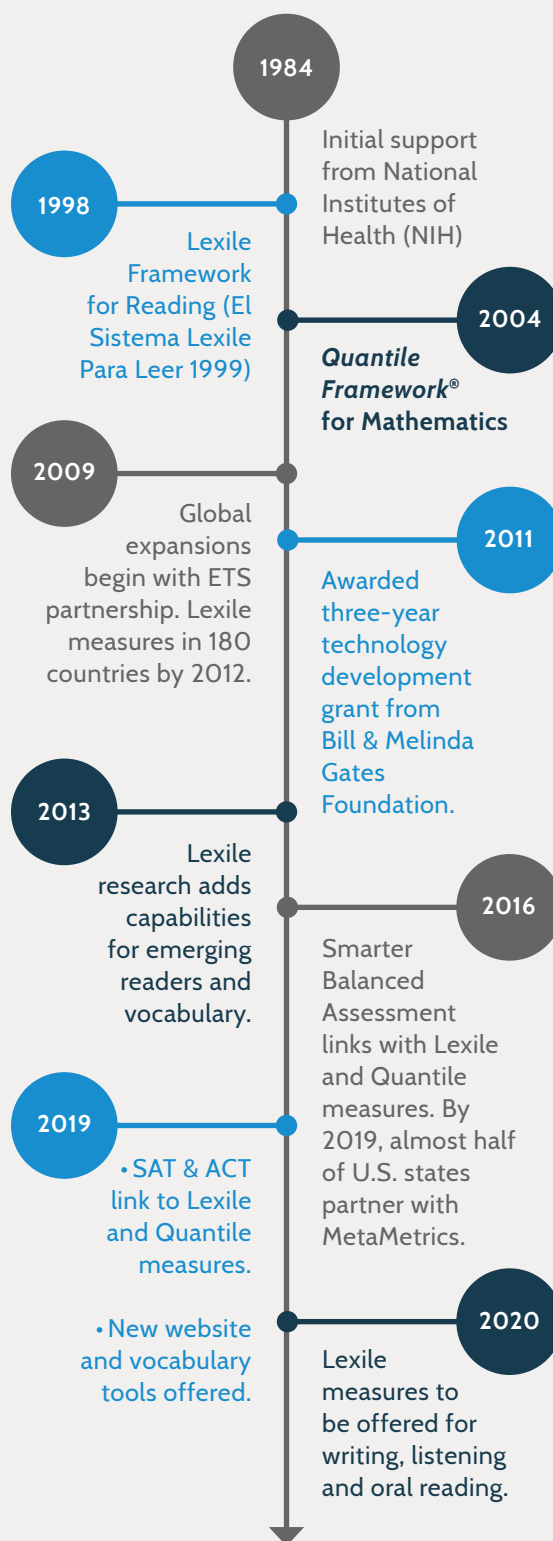
**Libraries** increase the visibility and exposure of your offerings when customers can easily search over 500,000 informational and literary titles with Lexile measures.

**Booksellers**, content publishers and developers help their customers find materials at the right fit or ensure that they are producing content at a specific reading level.

In **classrooms**, Lexile measures connect students of all ages and abilities with materials at the right challenge level to aid in reading comprehension and accelerate their learning to read.

# WHY TRUST LEXILE MEASURES?

Beginning in 1984, leaders at the National Institute of Child Health and Human Development (NICHD) supported the founding mission of connecting test results with instruction by funding MetaMetrics with a series of grants. That work resulted in MetaMetrics' flagship measurement, the Lexile Framework for Reading. Hundreds of independent studies over the past 35 years have confirmed the Lexile Framework as a trusted, objective means of measuring reading for English and Spanish text.





## HOW DO LEXILE MEASURES HELP MAKE READING MATCHES?

To realize the value of Lexile measures, consider the following scenario.

A parent takes her child to the store to buy shoes. The salesperson asks, “What kind of shoes do you need?” The parent replies, “He needs sneakers.” As the salesperson leads them to the sneakers, he asks, “How old is your child?” The parent answers, “12.” The salesperson then points to 10 pairs of sneakers on the wall and says, “Here are our age-12 sneakers.”

Not likely, right? We don’t buy shoes by age; we buy them by size. Twelve-year-olds vary a great deal by foot size. Similarly, their reading abilities vary a great deal. For years, students have been matched to books and other learning materials based on age or grade level.

As with shoe shopping, it’s important to recognize that **one size does not fit all** and ensure that each student is matched with ability-appropriate reading materials that accelerate learning and provide the best academic support possible. Millions of students now know their Lexile measures – or their ability “shoe size.” By obtaining a certified Lexile measure for a book or text, publishers indicate the fit their content provides.



### FIND A BOOK

Find “just right” books at [Hub.Lexile.com/fab](https://Hub.Lexile.com/fab).

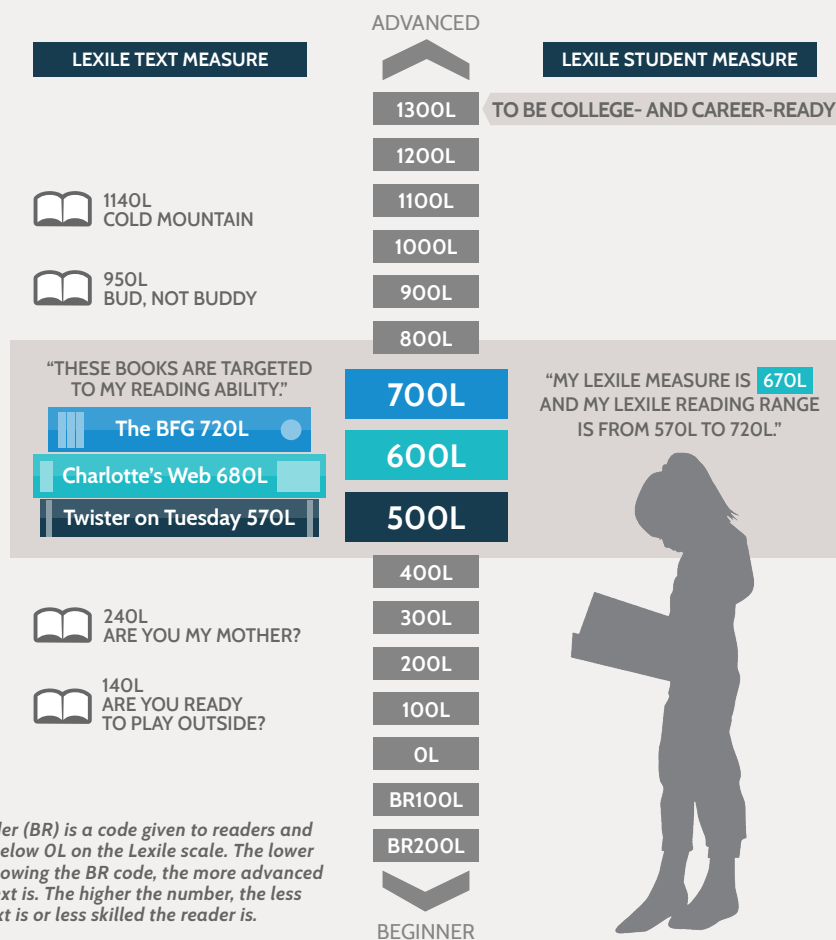


## Matching Readers With Text

Lexile measures provide valuable information about a student's reading comprehension. For example, "Charlotte's Web" in the graphic below has a Lexile level of 680L. A student with a measure of 670L reading a text measured at 670L is expected to have a 75 percent comprehension rate, the "default" rate used for reading instruction within the Lexile Framework. When a text's measure matches a student's measure, the student should not be frustrated by losing the meaning-thread of the text, but should encounter new vocabulary and sentence structures that promote growth in reading.

### The Lexile Scale

The ideal reading range to encourage growth for a student is from 100L below to 50L above the student's Lexile measure. In this case, the student's ideal reading range is from 570L to 720L. Lexile measures should not be the only information used to make reading selections for a student.





# HOW DO TEXTS RECEIVE LEXILE MEASURES?

Texts receive Lexile measures through the **Lexile Analyzer**<sup>®</sup>, an automated software program that uses an algorithm to evaluate the reading demand – or text complexity – of books, articles and other text.

The Lexile Analyzer measures text difficulty on a scale that ranges from beginning texts below OL to advanced texts above 1600L. Generally, longer sentences and words of lower frequency lead to higher Lexile measures. Shorter sentences and words of higher frequency lead to lower Lexile measures. The outcome of text analysis is a Lexile measure expressing text complexity.

## Early Reading Texts at 650L and Below

Often authors of early reading texts pay special attention to factors that facilitate comprehension such as easy vocabulary and decoding. Repetition and patterning are usually important in texts at this level to help early readers cultivate reading strategies and skills. To account for these unique factors, the Lexile Analyzer recognizes and evaluates four **Early Reading Indicators** for texts that are 650L and below (for English text only). They are:

- ➔ **Structure:** Low demand texts have more repeated words and phrases. Harder texts have fewer repeating words and phrases and place a higher demand on the reader.
- ➔ **Syntactic:** Low demand texts have shorter sentences and more words that overlap between sentences. Texts that put a higher demand on the reader have longer sentences and fewer words.
- ➔ **Semantic:** Low demand texts have more common, familiar and concrete vocabulary. Texts that have more rare, unfamiliar and abstract words place a higher demand on the reader.
- ➔ **Decoding:** Low demand texts have words with fewer syllables and simpler sounds (e.g., “net” and “shop”). Higher demand texts have words with more syllables and more complex sounds (e.g., “balloon” and “ceremony”).

## Example of Analyzed Text Below 650L

### DOCUMENT INFORMATION

Lexile Measure: 420L

Word Count: 153

Mean Sentence Length (MSL) 6.95

Mean Log Frequency (MLF) 3.43

### TEXT ON GECKOS (420L)

#### SAMPLE TEXT

Geckos are lizards. They can be found all over the world. They usually live in warm areas.

Shorter sentences

Most geckos sleep during the day. They are awake at night.

Easier decoding

Birds, snakes, and other animals hunt geckos. Geckos must be careful. They have a few ways to get away.

Geckos can lose their tails. Geckos can do this to get away from another animal. The other animal grabs a gecko's tail. It thinks it has caught the gecko, but it has really only caught its tail. The gecko gets away. Later, the gecko will grow a new tail.

Parallel sentence  
patterning

Geckos have special feet, too. Their feet help them to walk on very smooth things like grass. Geckos can also walk upside down. This helps the geckos get away, too.

Some geckos can change color. Geckos can look like what's around them.

Easier vocabulary

Animals hunting the geckos just see rocks or leaves. They do not see the geckos!

More concrete words

## Example of Analyzed Text Above 660L

### DOCUMENT INFORMATION

Lexile Measure: 980L

Word Count: 124

Mean Sentence Length (MSL) 13.78

Mean Log Frequency (MLF) 3.28

### TEXT ON GECKOS (980L)

#### SAMPLE TEXT

Geckos are found all over the world, usually in tropical and temperate climates. These lizards, most of which are nocturnal, have unique abilities that enable them to protect themselves from predators. Perhaps their most valuable defense is their detachable tail. When a gecko is captured, it can shed its tail, providing enough of a distraction for it to escape. Most geckos have small hairs on their feet that act as "suction cups" allowing them to climb smooth surfaces. They can even walk upside down across a ceiling. This ability provides them with the escape routes that their predators cannot access. Some geckos use camouflage to blend in with their immediate environment. This makes them virtually invisible to predators such as snakes and birds.

Longer sentences

Harder decoding

Diverse sentence  
patterning

Harder vocabulary

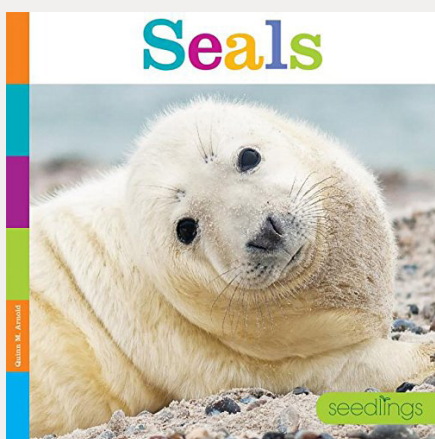
More use of  
abstract words



## Examples of Published Text

Once the content has been developed and published, your customers see book titles with Lexile measures across the Lexile scale connecting students to reading material at their unique ability level – both now and as their reading abilities grow.

### 330L: LOWER DEMAND TEXT EXAMPLE



Earless seals live in oceans. Thick blubber keeps seals warm. A seal's back flippers help it swim fast. A seal on land is low. Its claws dig into rocks and ice. Many seals have dark brown or gray fur. Some have spots. Seals molt every year.

### 1340L: HIGHER DEMAND TEXT EXAMPLE



The basic element, carbon, is one whose atoms have an almost infinite capacity for uniting with each other in chains and rings and various other configurations, and for becoming linked with atoms of other substances. Indeed, the incredible diversity of living creatures from bacteria to the great blue whale is largely due to this capacity of carbon. The complex protein molecule has the carbon atom as its basis, as have molecules of fat, carbohydrates, enzymes, and vitamins. So, too, have enormous numbers of nonliving things, for carbon is not necessarily a symbol of life.

## Limitations of Lexile Text Measures

### THE LEXILE ANALYZER IS NOT DESIGNED TO ANALYZE:

- Lists.
- Recipes.
- Poetry, plays/drama or song lyrics.
- Student writing.
- Multiple-choice or fill-in-the-blank questions.
- Instant messages, text language.

### LEXILE TEXT MEASURES DO NOT:

- Indicate text quality, story complexity or style aspects of language.
- Indicate text appropriateness for a student's age or developmental level, background, motivation or interests. (Book search databases such as Find a Book at **Hub.Lexile.com** allow students to search for books by Lexile measure *and* interests.)
- Measure text supports such as accompanying pictures found in graphic novels and children's books.
- Comprise the only information that should be used to make reading selections for a student.
- Take into account students' purpose for reading (assignment, pleasure, discovery, research, etc.).

# MetaMetrics' Research on Text Demands

MetaMetrics studied the text demands of typical reading material for students in grades 1 through 12. The “stretch” text measures (defined in 2012 through studies related to the development of the Common Core State Standards for English Language Arts) represent the demand of texts that would advance to 1300L, a text level that individuals typically encounter in their initial postsecondary college and career experiences.

LEXILE TEXT MEASURE RANGES (ENGLISH)	
GRADE	COLLEGE- AND CAREER-READY RANGES*
1	190L to 530L
2	420L to 650L
3	520L to 820L
4	740L to 940L
5	830L to 1010L
6	925L to 1070L
7	970L to 1120L
8	1010L to 1185L
9	1050L to 1260L
10	1080L to 1335L
11 & 12	1185L to 1385L

Ranges for grades 1 through 12 are based on the text complexity grade bands in the Common Core State Standards for English, Language Arts, Appendix A (Additional Information), NGA and CCSSO, 2012.

\* Following procedures similar to those established for grades 1 through 12, the text complexity range for kindergarten was determined to be BR40L to 230L.

A MetaMetrics' study begun in 2017 examined Spanish texts in grades 1-5 from a sample of states where statewide textbook adoptions were common practice. The study confirmed that, like English text complexity, Spanish text complexity increases across grades 1-5 and varies within each grade.

LEXILE TEXT RANGES TO GUIDE COLLEGE AND CAREER READINESS (SPANISH)	
GRADE	TEXT MEASURE RANGES (25 <sup>th</sup> to 75 <sup>th</sup> percentile)
1	450L to 540L
2	505L to 655L
3	635L to 740L
4	700L to 810L
5	730L to 870L

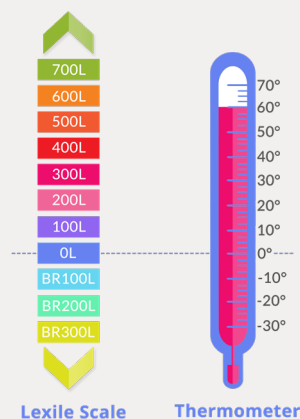
## For More Information

Please see “Text Complexity Research” ([metametricsinc.com/publisher-toolkit/communications/#faqs](http://metametricsinc.com/publisher-toolkit/communications/#faqs)) in the FAQs section of this Toolkit.

## Lexile Codes for Texts

Lexile codes are a two-letter designation before a Lexile text measure that provide more information about the type of book, its developmental appropriateness and/or its common or intended use.

- ➔ **AD: Adult Directed** - Better when read aloud to a student rather than having the student read independently.
- ➔ **BR: Beginning Reader** - Appropriate for emerging readers with a Lexile reader measure below OL. A Lexile measure of BR100L indicates that the Lexile measure is 100 units below OL. Just like -10 degrees is higher (warmer) than -30 degrees on a thermometer, a BR100L book is more complex than a BR300L book.
- ➔ **GN: Graphic Novel** - Graphic novels or comic books.
- ➔ **HL: High-Low** - Content to engage older students who need materials that are less complex and at a lower reading level.
- ➔ **IG: Illustrated Guide** - Nonfiction materials often used for reference.
- ➔ **NC: Non-Conforming** - Good for high-ability readers who still need age-appropriate content.
- ➔ **NP: Non-Prose** - Poems, plays, songs, recipes and text with non-standard or absent punctuation.







## HOW DO STUDENTS RECEIVE LEXILE MEASURES?

Students receive Lexile measures as a score from an assessment of English language arts or reading that is linked to the Lexile scale. Lexile measures for students are numeric representations of a student's ability to read English or Spanish and appear as a number followed by an "L". About half of U.S. students in grades 3-12 receive a Lexile measure each year. (See graphic of partner states at [metametricsinc.com/state-partnerships](https://www.metametricsinc.com/state-partnerships).) In addition to being used in school districts in all 50 states, Lexile measures are used across the globe.

Students receive Lexile measures through:

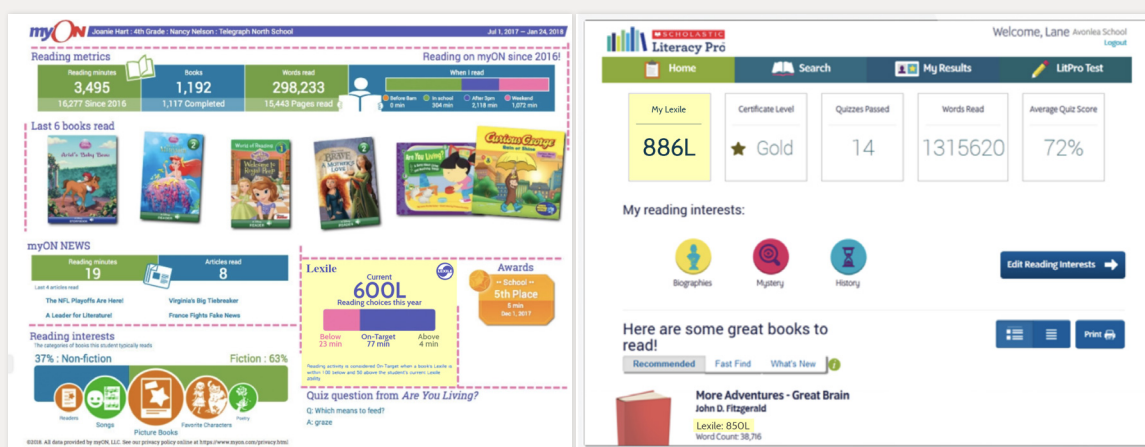
- ➞ State assessments and other high stakes testing.
- ➞ Standardized assessments such as NWEA's MAP Growth or Istation Reading.
- ➞ Placement and progress monitoring tests.

The Lexile Framework is instrument independent, not proprietary to one assessment or publisher. That makes it an objective standard for reading that publishers, assessment companies, leaders in education technology, and state education agencies can rely on. Lexile measures are used by:

- ➔ Students of all ages.
- ➔ Students of all backgrounds and abilities – from beginning readers to advanced.
- ➔ English Language Learners.

## Examples of Lexile Student Score Reporting

Below are examples of how digital reading programs report student Lexile measures through placement exams and progress monitoring. Often in programs such as these, students are then connected with digital reading content within their Lexile range. Personal interest filters along with placement and progress monitoring tests help create recommended reading lists.

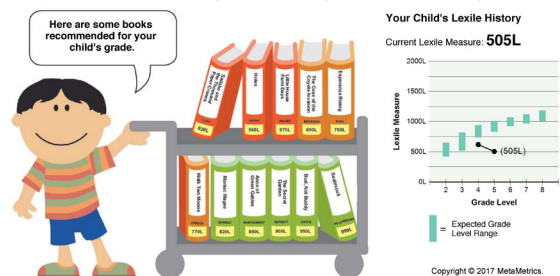


Below are score report examples from state assessments. First, a score report from Natmal®'s English Reading Comprehension Assessment E-LQ shows the student's Lexile measure and recommended reading range. Second, a portion of a Texas score report shows the student's Lexile measure and growth over multiple years. Next, a student score report from West Virginia shows both Lexile measures and Quantile measures (for mathematics) and the *Lexile®* and *Quantile®* Growth Planners.



### Your Child's Reading Measure History (Lexile® Measure)

The Lexile measure indicates the difficulty of the materials that your child can read successfully.



**Learn More About Your Child's Lexile Level**

For more information about your child's reading level history, including an interactive Lexile Growth Planner™ and a Find A Book Tool, visit [www.lexiaassessment.com/lexile](http://www.lexiaassessment.com/lexile)

Document # 1000-43365

Student: FIRSTNAME MI LASTNAME  
Student ID: 12345X

Grade: 8  
Test Date: Spring 2019

School: PLACEHOLDER SCHOOL NAME (SCHOOL ID#)  
District: PLACEHOLDER COUNTY (DISTRICT ID #)

**Lexile Measure: 825L** **Quantile Measure: 1000Q**

**WEST VIRGINIA LEXILE® AND QUANTILE® MEASURES REPORT**

#### Lexile Measures Help You:

- Find books and other texts to read at your student's level.
- Monitor growth toward college and career readiness.
- Discuss your student's progress with his or her teachers.

#### Quantile Measures Help You:

- Find mathematics resources at your student's level.
- Monitor growth toward college and career readiness.
- Discuss your student's progress with his or her teachers.

#### Monitor Your Student's Progress with the Lexile® Growth Planner & Quantile® Growth Planner

##### GET STARTED WITH THE:

LEXILE GROWTH PLANNER

QUANTILE GROWTH PLANNER

**EASY CAREER EXPLORATION**  
With the Growth Planner's career exploration feature, your student can select from hundreds of careers and evaluate the outlook for a career, including educational requirements, salary range and job demand. Your student can also make job comparisons within the same field and see the reading (Lexile) and mathematics (Quantile) demands associated with specific careers.



**TAKE A CLOSER LOOK AT THIS EXAMPLE FROM THE CAREER FEATURE**

**Career Overview - MACHINISTS**  
Field: Manufacturing, Career: Machinists

**EDUCATION LEVEL REQUIRED**  
Associate's Degree/Post-Secondary Certification (14 years)

**BRIGHT OUTLOOK**  
The following occupations have been used to have a Bright Outlook. Click on the Occupation to learn more on O\*NET.  
Computer User Support Specialists  
Welders, Cutters, and Welder Fitters  
Manufacturing Production Technicians

**WAGES AND EMPLOYMENT TRENDS**  
\$42,600 - Median wages  
2% to 4% - Projected growth  
40,700 - Projected job openings

Read More

LEARN MORE ABOUT LEXILE & QUANTILE MEASURES AT [WVDE.US/LEXILESANDQUANTILES](http://WVDE.US/LEXILESANDQUANTILES)

**LEXILE MEASURE REPORT**

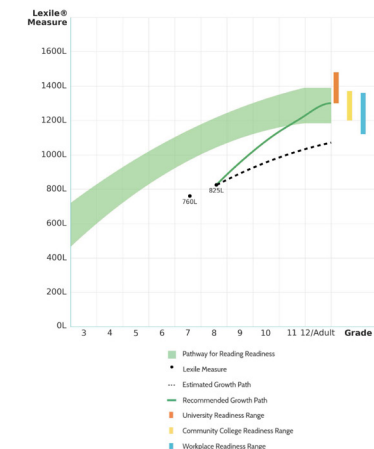
West Virginia Department of Education

#### YOUR STUDENT'S READING LEVEL

**825L**

When a Lexile measure is below OL, a BR (Beginning Reader) code is reported with the measure.

#### YOUR STUDENT'S READING GROWTH\*



\* A Recommended Growth Path will not be shown should the student's Estimated Growth Path be within or above the Pathway for Reading Readiness.

LEARN MORE ABOUT LEXILE & QUANTILE MEASURES AT [WVDE.US/LEXILESANDQUANTILES](http://WVDE.US/LEXILESANDQUANTILES)

#### HOW DOES MY STUDENT COMPARE?

##### Average Lexile Measures - Grade: 8

Average School Measure	Average District Measure	Average State Measure
000L	000L	000L

#### The Lexile Framework for Reading

uses the same scale to measure both your student's reading ability and the difficulty of texts.

#### Lexile Measures for Students

A Lexile reader measure describes your student's reading ability. To be on track to read college- and career-level text, your student's Lexile measure should fall in the green Pathway for Reading Readiness band on the graph. Choosing books from 100L below to 50L above your student's Lexile measure provides an ideal level of challenge for independent reading.

#### Lexile Measures for Text

A Lexile text measure tells you how challenging a text may be to comprehend. More than 100 million books and articles have Lexile measures, which range from below OL to above 1600L. Lexile measures assess text characteristics (such as vocabulary and sentence length) and do not consider age-appropriateness or prior knowledge.

## Typical Student Measures by Grade

There is no direct correspondence between grade levels or age and students' Lexile measures. However, this chart offers a sense of how students' Lexile measures compare to Lexile measures for students across the United States. These student norms are based on a MetaMetrics' study that included a sample of 3.5 million students from all 50 states and the U.S. Virgin Islands who were administered tests that reported Lexile measures from 2010 to 2016. The Lexile student measure ranges show the 50<sup>th</sup> through 90<sup>th</sup> percentiles by grade level for spring testing.

### 50TH TO 90TH PERCENTILE STUDENT LEXILE MEASURE NORMS FOR READING BY GRADE

GRADE	END-OF-YEAR STUDENT MEASURES (50 <sup>th</sup> to 90 <sup>th</sup> percentile)
1	165L to 565L
2	425L to 790L
3	645L to 980L
4	850L to 1155L
5	950L to 1255L
6	1030L to 1335L
7	1095L to 1405L
8	1155L to 1465L
9	1205L to 1515L
10	1250L to 1605L
11 & 12	1295L to 1605L

Percentile 10<sup>th</sup> 20<sup>th</sup> 30<sup>th</sup> 40<sup>th</sup> 50<sup>th</sup> 60<sup>th</sup> 70<sup>th</sup> 80<sup>th</sup> 90<sup>th</sup>

▲  
Students in the 50<sup>th</sup> percentile were at the mid-point of all the end-of-year reading test-takers.

▲  
Students in the 90<sup>th</sup> percentile scored higher than 90% of students taking the end-of-year reading test.

When reviewing student norms and percentile ranges, please keep in mind that **percentiles** or **norms** describe what is normal or typical, usually for a large sample of a population. **Grade-level norms** describe how students actually performed on assessments resulting in student Lexile measures. **Performance standards** are set by states and assessment developers and often use labels such as “basic” or “proficient”.

The typical or mid-point of student norms is **not** the same as achieving a grade-level performance standard. Often, only the top one third of students meet grade-level performance standards. A student at the 50<sup>th</sup> percentile could be both “typical” or the middle of the norm, but not meet the grade-level performance standard.



# WE'RE HERE TO SUPPORT YOU

---

Our team at MetaMetrics shares your vision for each student being ready to meet reading demands for college and career life. As partners in that work, we are here to support your efforts in understanding and using the Lexile Framework to help meet your goals.

Emily Weller will serve as your primary support contact. Please reach out with any questions and feedback you have.



**EMILY WELLER**  
PROGRAM MANAGER,  
MEASUREMENT SERVICES  
eweller@Lexile.com  
919.547.3452



See something missing or want to help us make this Toolkit better?  
Please send us an email!

## More Resources at Your Fingertips!

---

View all the communications and implementation resources we have to offer by accessing our online Publisher Toolkit at [metametricsinc.com/publisher-toolkit](https://metametricsinc.com/publisher-toolkit).

### Our online toolkit offers:

- ➔ Key messages to use with your customers
- ➔ Checklist for a successful launch
- ➔ Communication templates and sample language to use for your website, email campaigns, social media outreach and press release.
- ➔ Access to our Lexile logo and Certified Lexile Partner Seal
- ➔ Answers to Frequently Asked Questions
- ➔ Examples of how other publishers, booksellers and edtech companies have messaged Lexile measures



## KEY MESSAGES

Visit [metametricsinc.com/publisher-toolkit/communications](https://metametricsinc.com/publisher-toolkit/communications) for key messages to communicate Lexile measures to your customers.



MetaMetrics®

Find Us Online

[MetaMetricsInc.com](http://MetaMetricsInc.com)

[Lexile.com](http://Lexile.com)

[Quantiles.com](http://Quantiles.com)