

Pearson English Graded Readers for teens & young adult learners

Lexile Measures

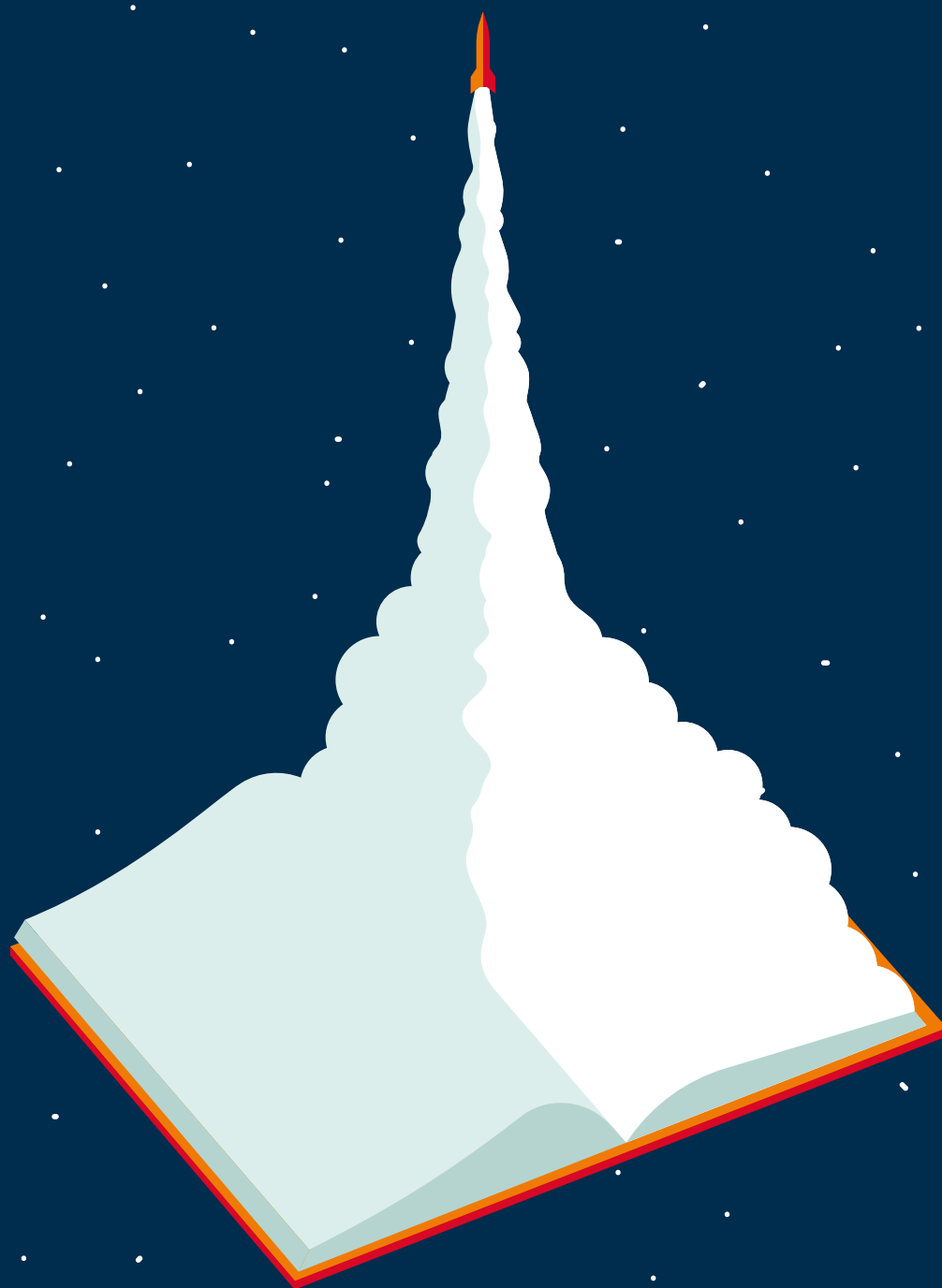


Illustration by Ben Wiseman

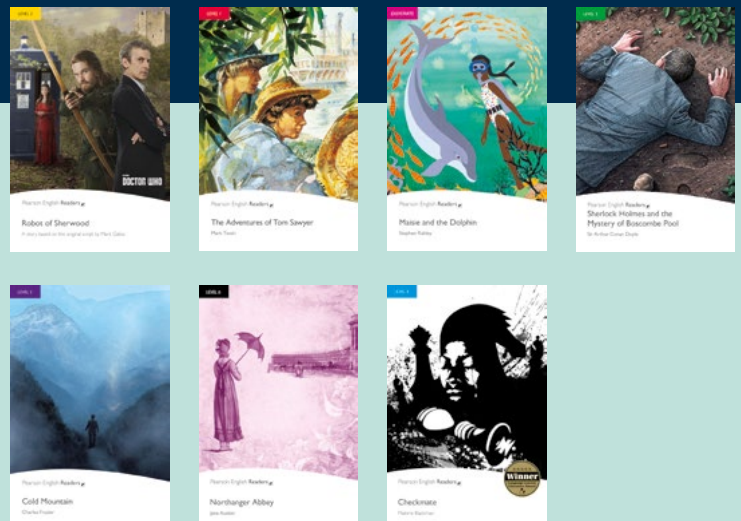
Graded Readers for teens & young adults

Pearson English Readers (7 levels) and **Pearson English Active Readers** (5 levels) are graded Readers for learners of English from pre-teen to Adult.

Offering a range of fully illustrated stories and topics for readers to enjoy, the books in both series are written to and graded within, a carefully controlled framework of vocabulary and grammar.

Each Level is aligned to Pearson's Global Scale of English (GSE) and to the Common European Framework of Reference (CEFR). To provide teachers and students with even greater depth and specificity per individual reader, we are happy to provide Lexile measures for titles in these series. Most titles fall within the bands of Lexile Measures detailed below. A few titles have higher Lexile Measure due to higher demand vocabulary and text complexity.

ENGLISH READERS	CEFR	GSE	LEXILE MEASURE
Easystart	A1–A2	23–33	350–500
Level 1	A1–A2+	29–38	400–550
Level 2	A2–A2+	32–42	450–650
Level 3	A2+–B1	37–50	480–680
Level 4	B1–B2	46–60	500–850
Level 5	B1+–B2+	54–72	550–950
Level 6	B2–C1	64–83	600–1000



ENGLISH ACTIVE READERS	CEFR	GSE	LEXILE MEASURE
Easystart	A1–A2	23–33	350–500
Level 1	A1–A2+	29–38	400–550
Level 2	A2–A2+	32–42	450–650
Level 3	A2+–B1	37–50	480–680
Level 4	B1–B2	46–60	500–850



The Lexile Framework® for Reading

The Lexile Framework for Reading is a scientific approach to measuring reading ability and the text demand of reading materials. The Lexile Framework includes a Lexile measure and the Lexile scale. A Lexile measure represents both the complexity of a text, such as a book or article, and an individual's reading ability. Lexile measures are expressed as numeric measures followed by an "L" (for example, 850L), and are placed on the Lexile scale. The Lexile scale is a developmental scale for measuring reader ability and text complexity, ranging from below 0L for beginning readers and beginning reader materials to above 2000L for advanced readers and materials. Knowing the Lexile measures of both the learner and a text helps teachers to predict how the text matches the learner's ability — whether it may be too easy, too difficult or just right.

Reading Indicators for early readers

In addition to the Lexile measure, each text is evaluated using 4 x Early Reading Indicators. These Reading Indicators are relevant to both young learners and those learning to read at any age, as they help to identify text features that may make a text more or less challenging for a learner.

The 4 reading indicators are:

1

PATTERNS

Easier texts have more repeated words and phrases. Harder texts have fewer repeating words and phrases.

2

SENTENCES

Easier texts have shorter sentences and more words that overlap between sentences. Harder texts have longer sentences and fewer words that overlap between sentences.

3

VOCABULARY

Easier texts have more common, familiar, and concrete words. Harder texts have more rare, unfamiliar, and abstract words.

4

DECODING

Easier texts have words with fewer syllables and simpler sounds. Harder texts have words with more syllables and more complex sounds.

These indicators are assigned a level of difficulty from Low Demand to Very High Demand and are applied to texts with a Lexile score of 650L or lower.