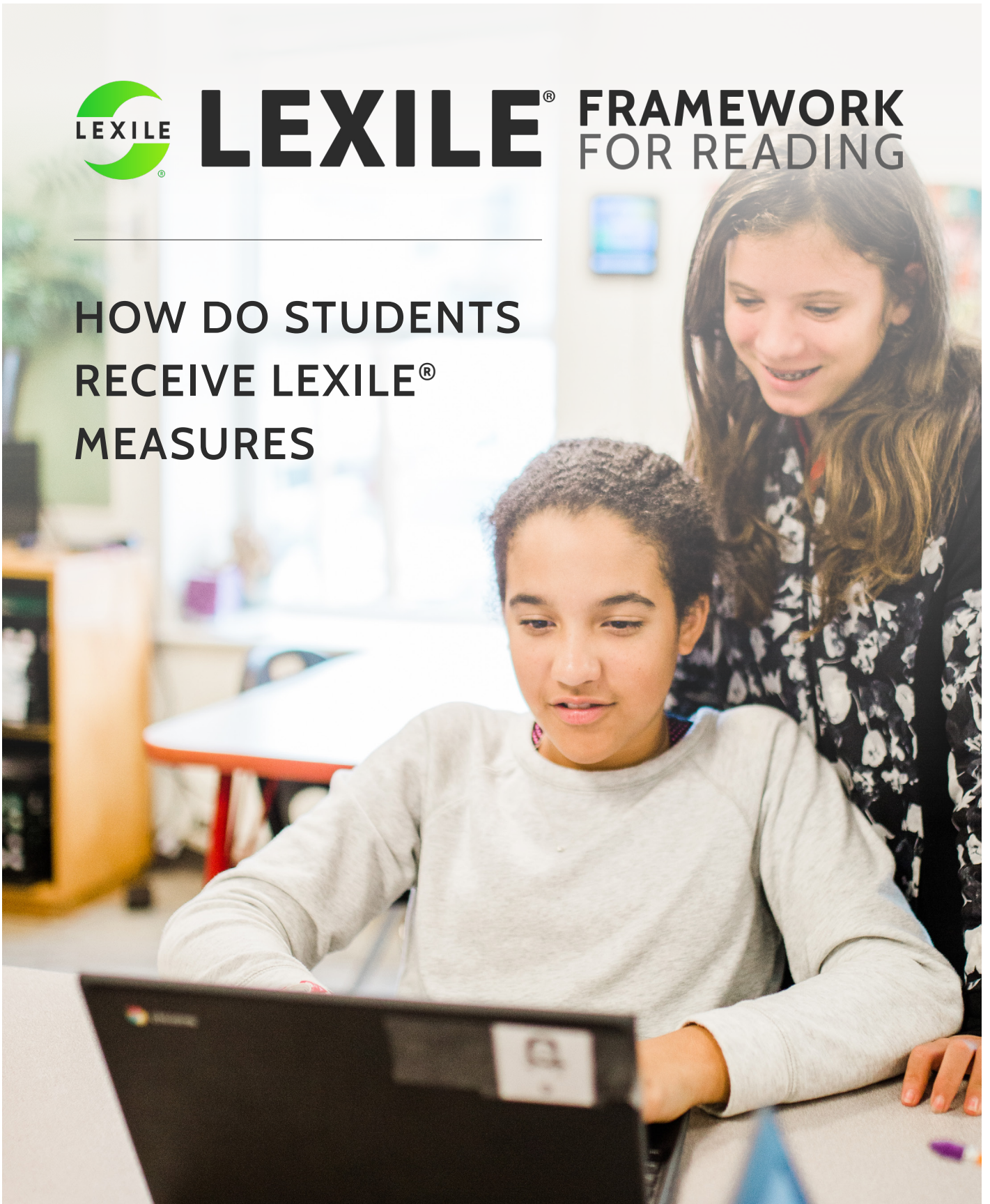




LEXILE[®] FRAMEWORK FOR READING

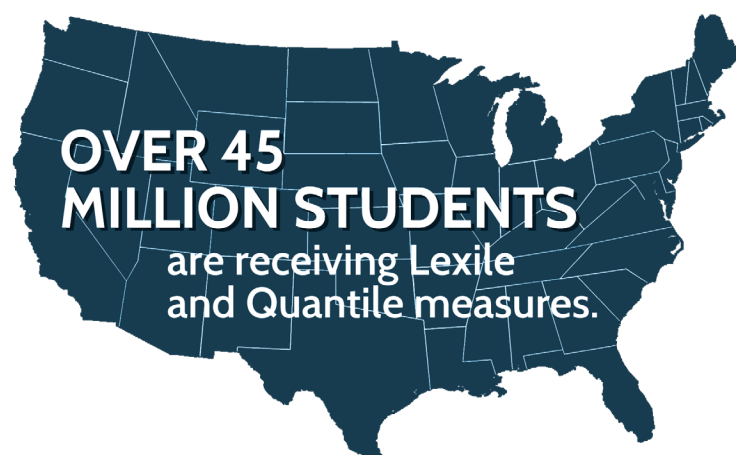
HOW DO STUDENTS RECEIVE LEXILE[®] MEASURES



How Do Students Receive Lexile Reading Measures?

Students receive Lexile reading measures from an assessment of English language arts or reading that is linked to the Lexile scale. Lexile measures for students are numeric representations of a student's ability to read and appear as a number followed by an "L". About half of U.S. students in grades 3-12 receive a Lexile measure each year. (See graphic of Lexile partner states at [metametricsinc.com/state-partnerships](https://www.metametricsinc.com/state-partnerships).) Students in all grades across school districts in all 50 states receive Lexile measures through:

- ➔ State assessments and other high stakes testing.
- ➔ Benchmark or interim assessments.
- ➔ Placement and progress monitoring tests.



Quantile® measures are our math metric. Like the Lexile Framework, the Quantile® Framework for Mathematics measures student ability and content difficulty on the same scale. Having a common scale on which the measurement of students' math ability and math content are placed, provides the critical link for supporting personalized learning in math.

The Lexile Framework is instrument independent, not proprietary to one assessment or publisher. That makes it an **objective standard for reading** that assessment companies, leaders in education technology, publishers and state departments of education can rely on. Lexile measures are used by:

- ➔ Students of all ages.
- ➔ Students of all backgrounds and abilities – from beginning readers to advanced.
- ➔ English Language Learners.

Students in All Stages of Learning to Read Receive Lexile Measures

Because reading proficiency by third grade is such an important predictor of high school graduation and career success¹, more state accountability systems than ever are recognizing this literacy milestone. Assessments reporting Lexile reading measures can provide valuable information that helps early childhood educators accelerate reading growth for all students.

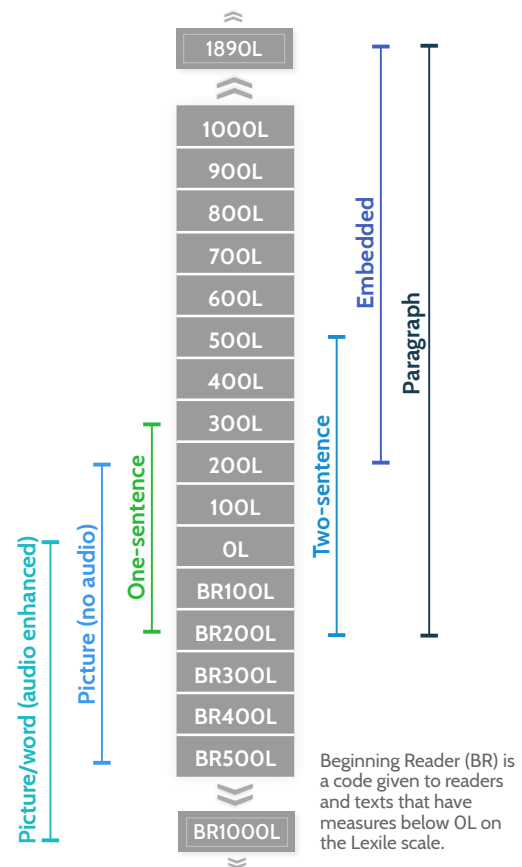
The Lexile Framework for Reading can assess even emergent literacy skills. We can link to or offer test items that evaluate preliteracy reading skills. Lexile reading measures for students can be offered through assessments in a seamless system throughout the student's reading journey.

¹ National Research Council. (1998). *Preventing Reading Difficulties in Young Children*. Edited by C. Snow, S. Burns, and P. Griffin, Committee on the Prevention of Reading Difficulties in Young Children. Washington, DC: National Academy Press.

Lexile® Item Bank Features Preliteracy Items

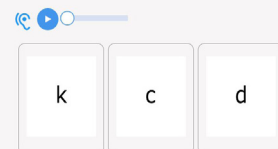
The Lexile Item Bank can be used to develop tests that assess alphabet knowledge, phonological awareness, and phonics, as well as vocabulary and comprehension. Some items include audio and visual support for accessibility.

TEST ITEMS SPAN THE LEXILE SCALE



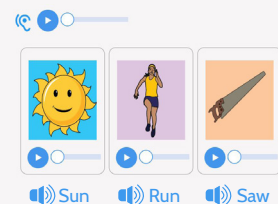
ALPHABET KNOWLEDGE refers to learners' awareness of uppercase and lowercase letters, letter sequencing and letter-sound correspondence.

Can you find the letter 'c'?



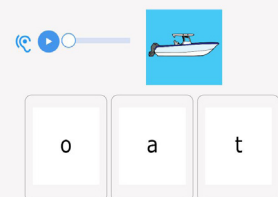
PHONOLOGICAL AWARENESS refers to learners' ability to focus on and manipulate phonemes in spoken syllables and words. Phonemes, the smallest units making up spoken language, combine to form syllables and words.

What word is made from the sounds /s/ - /u/ - /n/? Click the picture to hear the word.



PHONICS is decoding the relationship between the letters (or letter combinations) in written language and the individual sounds in spoken language.

This is a picture of a boat. Which is the long vowel sound?



Student Lexile Reading Measure Norms by Grade

This chart offers a sense of how students' Lexile reading measures compare to grade levels. These student norms are based on a study that included a sample of 3.5 million students from all 50 states and the U.S. Virgin Islands who were administered tests that reported Lexile measures from 2010 to 2016. The student Lexile reading measure ranges in the chart show the 50th through 90th percentiles by grade level for spring testing.

50th to 90th Percentile Student Lexile Reading Measure Norms for Reading by Grade

Grade	End-of-Year Student Measures, 50th to 90th Percentile
1	165L to 565L
2	425L to 790L
3	645L to 980L
4	850L to 1155L
5	950L to 1255L
6	1030L to 1335L
7	1095L to 1405L
8	1155L to 1465L
9	1205L to 1515L
10	1250L to 1605L
11 & 12	1295L to 1605L



Your customers can visit the Hub to see interactive *Lexile*® Grade Level Charts with student Lexile measures by grade level and percentile rankings for test administrations at the beginning, middle and end of year.

hub.lexile.com/lexile-grade-level-charts



MetaMetrics®

Find Us Online

MetaMetricsInc.com

Lexile.com